

## Hood Ghost 90 Filotop

Hoods

Code: 2451 090



### DETAILS

Coloring Black

---

Material Stainless steel + glass

---

Texture Brushed in line

---

Height from floor 300mm

---

Energy class A

---

Product details Filotop inserting

---

Dimensions on plane 875x120mm

---

Grease filters 2 grease adonized aluminium filtre

---

Operation Suction hood (filtering mode with optional carbon filters)

---

Cut out 842x100 mm

---

Air exhaust hole  $\varnothing$  120/150 mm

---

Lighting LED Strip lighting (5W - 4.200 kelvin)

---

Notes: The motor can be positioned frontally, on the back of the hood and in remote mode with the appropriate optional kit.

---

Air flow rate 760mc/h

---

Motor power 275W

---

Hood type Table-top hood

---

Type of commands Touch Control

---

Suction speed 4 operating speeds

---

Notes: Fume exhaust ducts must have an internal diameter not lower than 120 mm

---

## FEATURES

Filter cleaning notice This function keeps track of the hours of use of the hood and signals the need to wash the filters in order to maintain the perfect efficiency of the hood.

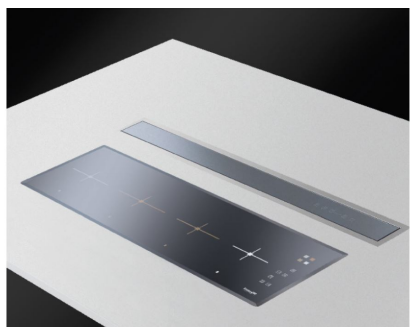
---

Led lighting Particular attention to energy saving with LED lighting systems. They assure a 10 times lower consumption and a 10 times longer duration. Our LED lights are designed to create an adequate comfort and safety in the cooking area.

---



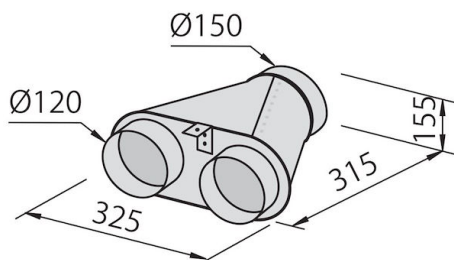
## GALLERY



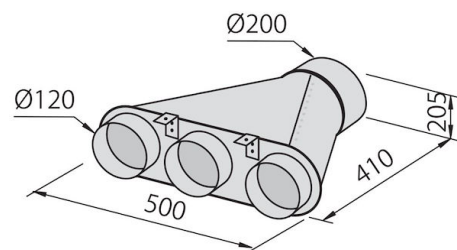
## OPTIONAL ACCESSORIES



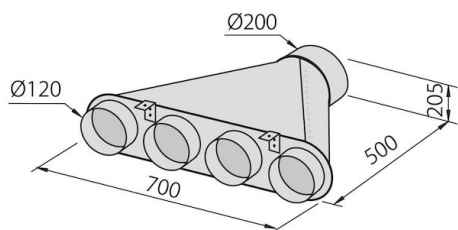
**Carbon filters kit**  
9700 460



**Collector for 2 pipes**  
2523 000



**Collector for 3 pipes**  
2524 000



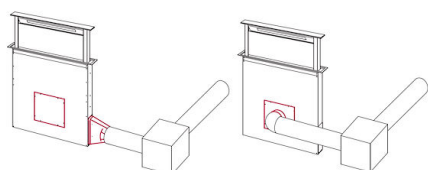
**Collector for 4 pipes**  
2525 000



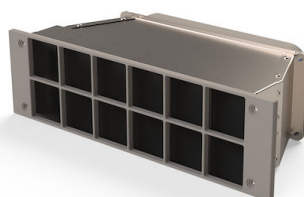
**Flexible silencing canalization**  
9700 602



**Flexible silencing canalization**  
9700 603



**Remote engine installation kit**  
9700 459



**Carbon filter**  
9700 574